

ORDINANCE NO. 2020-66

An Ordinance of the Board of County Commissioners of Osceola County, Florida, Amending Ordinance 2020-49 Establishing the Edgewater East Community Development District, to correct a scrivener's error; Providing for Severability; Providing for Conflict; and Providing an Effective Date.

RECITALS

WHEREAS, Edgewater Property Florida Holdings, LLC ("Petitioner"), having obtained written consent to the establishment of the District by the owner of 100 percent (100%) of the real property to be included in the District, filed a Petition to Establish the Edgewater East Community Development District ("Petition") with the Osceola County Board of Commissioners ("County") pursuant to Section 190.005(2)(a) and 190.046(1)(h), *Florida Statutes*, to adopt an ordinance establishing the Edgewater East Community Development District ("District") pursuant to Chapter 190, *Florida Statutes*; and

WHEREAS, all interested persons and affected units of general-purpose local government were afforded an opportunity to present oral and written comments on the Petition at a duly noticed public hearing conducted by the County, pursuant to Section 190.005(2)(b) and 190.046(1)(h), *Florida Statutes*; and

WHEREAS, pursuant to the information as stated above, the Board of County Commissioners of Osceola County, Florida granted the Petition to establish the Edgewater East Community Development District; and

WHEREAS, the County adopted Ordinance 2020-49 on June 15, 2020 establishing the District; and

WHEREAS, it has come to the District's and County's attention that the total acreage of the District reflected in the Ordinance 2020-49 and its Exhibit A reflects a scrivener's error which should be corrected; and

WHEREAS, with the exception of correcting the total acreage of the District, no other change to Ordinance 2020-49 is being made.

NOW, THEREFORE, BE IT ORDAINED BY THE BOARD OF COUNTY COMMISSIONERS OF OSCEOLA COUNTY, FLORIDA:

SECTION 1. RECITALS.

The above RECITALS are adopted as Findings of Fact in support of this Ordinance.

SECTION 2. AUTHORITY.

This ordinance is enacted in compliance with and pursuant to the Uniform Community Development District Act of 1980, Chapter 190, *Florida Statutes*.

SECTION 3. TITLE AMENDMENT.

The title to Ordinance 2020-49 is hereby amended and restated to read:

An Ordinance of the Board of County Commissioners of Osceola County, Florida, Establishing the Edgewater East Community Development District, at Approximately 1,284.715 Acres, Pursuant to Chapter 190, Florida Statutes; Naming the District; Describing the External Boundaries of the District; Describing the Functions and Powers of the District; Designating Five Persons to Serve as the Initial Members of the District's Board of Supervisors; Providing for Severability; Providing for Conflict; and Providing an Effective Date.

SECTION 4. EXTERNAL BOUNDARIES OF THE DISTRICT.

Section 4 of Ordinance 2020-49 is hereby amended and restated to read:

The external boundaries of the District are described in **Exhibit A** attached hereto and incorporated by reference, the overall boundaries encompassing 1,284.715 acres, more or less.

SECTION 5. EXHIBIT A.

Exhibit A to Ordinance 2020-49 is hereby replaced with the corrected **Exhibit A** attached hereto.

SECTION 6. REMAINDER OF ORDINANCE 2020-49 REMAINS UNCHANGED.

Except as expressly amended herein, Ordinance 2020-49 shall remain in full force and effect

SECTION 7. SEVERABILITY.

If any provision of this ordinance or the application thereof is held by a court of competent jurisdiction to be illegal, invalid or unenforceable, such provisions shall be deemed to be severable and the remaining provisions shall continue in full force and effect provided that the illegal, invalid or unenforceable provision is not material to the logical and intended interpretation of this Ordinance.

SECTION 8. CONFLICT.

Any ordinance or part thereof, or any resolution, or part thereof, which is in conflict with this ordinance or part hereof is hereby repealed to the extent of the conflict.

SECTION 9. EFFECTIVE DATE.

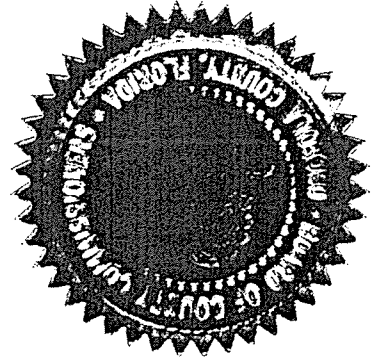
The Clerk shall file a certified copy of this Ordinance with the Department of State within ten days of its adoption. This Ordinance shall take effect immediately upon its filing with the Department of State.

BOARD OF COUNTY COMMISSIONERS
OF OSCEOLA COUNTY, FLORIDA

By: *Tuan Janer*
Chairman/Vice-Chairman

ATTEST:
OSCEOLA COUNTY CLERK OF THE BOARD

By: *Debra A. Davis*
Clerk/Deputy Clerk of the Board



As authorized for execution at the Board of
County Commissioners meeting of:

September 21, 2020
Ordinance 2020-66

EXHIBIT A
Legal Description with map

EDGEWATER EAST CDD

LEGAL DESCRIPTION
CDD PARCEL – 1

A parcel of land being a portion of the Northeast 1/4 of Section 17, Township 26 South, Range 30 East, Osceola County, Florida, AND Government Lots 1 and 2 of Section 17, Township 26 South, Range 30 East, Osceola County, Florida, LESS AND EXCEPT that portion of Government Lot 1, in Section 17, Township 26 South, Range 30 East, lying Northwesterly of Canal C-31 a/k/a St. Cloud Canal, AND Lots 67, 68, 69, 70, 74, 75, 76, 77, 78, 83, 84, 85, 86, 87, 89, 90, 91, 92, 93, 94, 100, 101, 102, 103, 104, 105, 106, 107, 108, 117, 118, 119, 120, 121, 122, 123 and 124, THE SEMINOLE LAND AND INVESTMENT COMPANY'S (INCORPORATED) SUBDIVISION OF SECTION 17, TOWNSHIP 26 SOUTH, RANGE 30 EAST, as recorded in Plat Book "B", Page 55, Public Records of Osceola County, Florida, and being more particularly described as follows:

Commence at the Northeast corner of said Section 17; thence run N89°41'52"W along the North line of said Section 17, a distance of 1375.99 feet to the Point of Beginning; thence departing said North line, run thence run S00°18'08"W, a distance of 2,641.70 feet to a point on the South line of the Northeast ¼ of said Section 17; thence run S89°40'58"E along said South line, a distance of 84.65 feet; thence departing said South line, run along the Easterly line of the aforesaid Platted Lots the following five (5) courses and distance; thence run S00°34'45"E, a distance of 1,333.22 feet; thence run N89°31'28"W, a distance of 643.27 feet; thence run S00°36'41"E, a distance of 329.96 feet; thence run N89°29'18"W, a distance of 678.18 feet; thence run S00°38'28"E, a distance of 970.25 feet to a point on the North Right of Way line of Clay Whaley Road; thence run N89°30'02"W along said North right of Way line, a distance of 2,405.26 feet to a point on the Meander-Witness line of Lake Tohopekaliga; thence along said Meander-Witness line the following seven (7) courses and distances; thence run N10°10'23"E, a distance of 954.03 feet; thence run N24°40'23"E, a distance of 1,188.07 feet; thence run N58°10'23"E, a distance of 264.02 feet; thence run N54°10'23"E, a distance of 792.05 feet; thence run N38°40'23"E, a distance of 1,188.07 feet; thence run N06°19'37"W, a distance of 330.02 feet; thence run N26°19'37"W, a distance of 1,122.07 feet; thence run N61°49'37"W, a distance of 792.05 feet to a point on the aforesaid North line of Section 17; thence run S89°41'52"E along said North line, a distance of 2,586.89 feet to the Point of Beginning.

Containing 266.3 acres, more or less. (calculated to the Meander-Witness line as shown on the sketch)

Containing 250.5 acres, more or less. (calculated to Elevation 56.5 contour line – Safe Development line of Lake Tohopekaliga)

(these areas also includes platted Right of Ways lying within and adjacent to the boundary of the described parcel that have not been formally vacated)

CDD PARCEL – 2

A parcel of land being a portion of the Southwest 1/4 of Section 16, Township 26 South, Range 30 East, Osceola County, Florida, and being more particularly described as follows:

Commence at the Southwest corner of said Section 16; thence run N00°31'03"W along the West line of the Southwest ¼ of said Section 16, a distance of 1328.92 feet to the Point of Beginning; thence continue N00°31'03"W along said West line, a distance of 1,328.82 feet to the Northwest corner of the Southwest ¼ of said Section 16; thence run S89°35'06"E along the North line of the Southwest ¼, a distance of 1,258.21 feet to a Point on a non-tangent curve, concave to the Northeast, having a Radius of 6,229.58 feet and a Central Angle of 07°47'11", said point being a point on the Westerly line of property per Stipulated Order of Taking as recorded in Official Records Book 2776, Page 2504, Public Records of Osceola County, Florida; thence along said Westerly line the following seven (7) courses and distances; thence run Southeasterly, along the Arc of said curve, a distance of 846.58 feet (Chord Bearing = S35°19'41"E, Chord = 845.92 feet) to a point; thence run N50°46'44"E, a distance of 298.80 feet; thence run S31°09'21"E, a distance of 340.17 feet to the Point of Curvature of a curve, concave to the Northeast, having a Radius of 2,958.79 feet and a Central Angle of 11°37'31"; thence run Southeasterly, along the Arc of said curve, a distance of 600.34 feet (Chord Bearing = S36°58'07"E, Chord = 599.31 feet) to the Point of Tangency thereof; thence run S42°46'53"E, a distance of 199.38 feet; thence run S11°58'13"W, a distance of 293.39 feet to a Point on a non-tangent curve, concave to the East, having a Radius of 1,296.23 feet and a Central Angle of 00°03'00"; thence run Southerly, along the Arc of said curve, a distance of 1.13 feet (Chord Bearing = S11°18'47"W, Chord = 1.13 feet) to a point on the Westerly line of Road A Connector as recorded in Official Records Book 4249, Page 2879; thence along said Westerly line the following two (2) courses and distances; thence run S23°39'16"W, a distance of 220.82 feet; to the Point of Curvature of a curve, concave to the Northwest, having a Radius of 1,120.00 feet and a Central Angle of 07°52'31"; thence run Southwesterly, along the Arc of said curve, a distance of 153.95 feet (Chord Bearing = S27°35'32"W, Chord = 153.82 feet) to a point on the South line of Pond 9 as recorded in Official Records Book 4249, Page 2879; thence along said South line the following two (2) courses and distances; thence run S89°36'48"W, a distance of 116.36 feet; thence run N50°13'38"W, a distance of 249.11 feet to a point on the North line of the South 19.6176 acres of the Southeast ¼ of the Southwest ¼ of said Section 16; thence run N89°36'17"W along said North line, a distance of 655.87 feet to a point on the East line of Road A Segment 1 as recorded in Official Records Book 4249, Page 2879; thence run N00°21'47"W along said East line, a distance of 551.30 feet to a point on the South line of the North ½ of the Southwest ¼ of said Section 16; thence run N89°35'57"W along said South line, a distance of 1,450.60 feet to the Point of Beginning.
Containing 3,198,081.98 square feet or 73.418 acres, more or less

CDD PARCEL – 3

A parcel of land being the East ¼ of the Northwest 1/4 of the Northwest ¼ of Section 21, Township 26 South, Range 30 East, Osceola County, Florida, AND Lots 5, 11, 12, 21, 22, 27, 28, 37, 38, 39, 40, 41, 42, 43, 44, 53, 54, 55, 56, 57, 58, 59, 60, 69, 70, 71, 72, 73, 74, 88, 89, 90, 104, 105, 106, 108, 117, 118, 119, 123 and a portion of Lots 6, 87, and 122, THE SEMINOLE LAND AND INVESTMENT COMPANY'S (INCORPORATED) SUBDIVISION OF SECTION 21, TOWNSHIP 26 SOUTH, RANGE 30 EAST, as recorded in Plat Book "B", Page 8, Public Records of Osceola County, Florida, and being more particularly described as follows:

Begin at the Northeast corner of said Lot 5, said point being a point on the West Right of Way line of Kissimmee Park Road (State Road 525); thence along said West Right of Way line the following two (2) courses and distances; thence run S00°20'10"E, a distance of 2,619.93 feet; thence run S00°19'41"E, a distance of 329.00 feet; thence departing said West Right of Way line, run N89°41'51"W, a distance of 1,284.08 feet; thence run S00°17'29"E, a distance of

409.30 feet to a point on the Easterly extension of the North line of Well Site #3 as recorded in Official Records Book 3040, Page 35, Public Records of Osceola County, Florida; thence along the boundary of said Well Site #3 the following three (3) courses and distances; thence run N89°45'24"W, a distance of 285.03 feet; thence run S00°17'29"E, a distance of 250.03 feet; thence run S89°45'24"E, a distance of 285.03 feet; thence run S00°17'29"E, a distance of 329.66 feet; thence run N89°47'10"W, a distance of 677.35 feet; thence run S00°16'23"E, a distance of 330.01 feet; thence run S89°48'56"E, a distance of 677.45 feet; thence run S00°17'29"E, a distance of 329.66 feet; thence run S89°50'42"E, a distance of 642.55 feet; thence run N00°18'35"W, a distance of 329.33 feet; thence run S89°48'56"E, a distance of 642.45 feet to a point on the aforesaid West Right of Way line of Kissimmee Park Road; thence run S00°19'41"E along said West Right of Way line, a distance of 658.00 feet; thence departing said West Right of Way line, run N89°52'28"W, a distance of 642.65 feet; thence run S00°18'35"E, a distance of 309.33 feet to a point on the North Right of Way line of Kissimmee Park Road; thence run N89°54'14"W along said North Right of Way line, a distance of 1,070.48 feet to point on the boundary of Well Site #1, as recorded in Official Records Book 3040, Page 13, Public Records of Osceola County, Florida; thence along said boundary the following two (2) courses and distances; thence run N00°16'23"W, a distance of 250.02 feet; thence run N89°54'14"W, a distance of 250.02 feet; thence run N00°16'23"W, a distance of 390.00 feet; thence run N89°50'42"W, a distance of 660.05 feet; thence run N00°15'17"W, a distance of 2,644.75 feet; thence run S89°30'15"E, a distance of 20.00 feet; thence run N00°15'17"W, a distance of 660.08 feet; thence run S89°37'37"E, a distance of 968.46 feet; thence run N00°17'07"W, a distance of 1,299.70 feet to a point on the South Right of Way line of Clay Whaley Road; thence run S89°36'17"E along said South Right of Way line, a distance of 329.27 feet to a point on the boundary of Road A Segment 1 and Road A Connector as recorded in Official Records Book 4249, Page 2879, Public Records of Osceola County, Florida; thence along said boundary the following four (4) courses and distances; thence run S00°21'47"E, a distance of 70.01 feet; thence run S89°36'17"E, a distance of 130.01 feet; thence run N00°21'47"W, a distance of 10.01 feet to a Point on a non-tangent curve, concave to the North, having a Radius of 1,280.00 feet and a Central Angle of 17°22'39"; thence run Easterly, along the Arc of said curve, a distance of 388.22 feet (Chord Bearing = N81°28'18"E, Chord = 386.73 feet) to a point on the aforesaid South Right of Way line of Clay Whaley Road; thence run S89°36'17"E along said South Right of Way line, a distance of 786.67 feet to the Point of Beginning.

Containing 218.579 acres, more or less.

(these areas also include platted Right of Ways lying within and adjacent to the boundary of the described parcel that have not been formally vacated)

CDD PARCEL – 4

A parcel of land being a portion of the Southeast $\frac{1}{4}$ of Section 16, Township 26 South, Range 30 East, Osceola County, Florida, AND Lots 3, 14, 19, 30, 31, 34, 35, 46, 47, 49, 50, 51, 61, 62, 64, 65, 66, 67, 68, 78, 79, 80, 81, 82, 83, 94, 95, 96, 97, 98, 99, 111, 112, 113, 114, 125, 126, 127 and 128 and a portion of Lots 2, 15, 17, 18, 32, 33, 48, and 52, THE SEMINOLE LAND AND INVESTMENT COMPANY'S (INCORPORATED) SUBDIVISION OF SECTION 21, TOWNSHIP 26 SOUTH, RANGE 30 EAST, as recorded in Plat Book "B", Page 8, Public Records of Osceola County, Florida, AND a portion of Lots 41, 56, 57, 72, 73, 88, 89, 104, 105, and 120, THE SEMINOLE LAND AND INVESTMENT COMPANY'S (INCORPORATED) SUBDIVISION OF SECTION 22, TOWNSHIP 26 SOUTH, RANGE 30 EAST, as recorded in Plat Book "B", Page 9, Public Records of Osceola County, AND Lots 25, 40, 41, 56, 57, 72, 73,

88, 89, 104 and a portion of Lots 26, 39, 42, 55, 58, 71, 74, 87, 90, 103 and 106, THE SEMINOLE LAND AND INVESTMENT COMPANY'S (INCORPORATED) SUBDIVISION OF SECTION 27, TOWNSHIP 26 SOUTH, RANGE 30 EAST, as recorded in Plat Book "B", Page 14, Public Records of Osceola County, AND Lots 4, 6, 7, 10, 11, 13, 20, 21, 22, 23, 26, 27, 28, 29, 30, 35, 35, 37, 38, 39, 42, 43, 44, 45, 46, 50, 51, 52, 53, 54, 55, 58, 59, 60, 61, 62, 63, 64, 65, 66, 67, 68, 69, 70, 71, 74, 75, 76, 77, 78, 79, 80, 81, 82, 83, 84, 85, 86, 87, 90, 91, 92, 93, 94, 95, 96, 97, 98, 99, 100, 103, 106, 109, 110, 111, and 112 and a portion of Lots 5 and 12, THE SEMINOLE LAND AND INVESTMENT COMPANY'S (INCORPORATED) SUBDIVISION OF SECTION 28, TOWNSHIP 26 SOUTH, RANGE 30 EAST, as recorded in Plat Book "B", Page 15, Public Records of Osceola County, and being more particularly described as follows:

Begin at the Northeast corner of Section 28, Township 26 South, Range 30 East; thence run N89°57'03"W, a distance of 1,979.45 feet; thence run S00°03'01"E, a distance of 995.36 feet; thence run S89°52'30"E, a distance of 659.61 feet; thence run S00°02'15"E, a distance of 996.23 feet; thence run S89°47'57"E, a distance of 659.39 feet; thence run S00°01'29"E, a distance of 332.37 feet; thence run S89°46'26"E, a distance of 659.32 feet; thence run N00°00'43"W, a distance of 1,330.57 feet; thence run S89°14'16"E, a distance of 808.08 feet to a point on the West Right of Way line of the Florida's Turnpike; thence run S07°25'37"E along said West Right of Way line, a distance of 3,685.90 feet; thence departing said West Right of Way line, run N89°43'24"W, a distance of 618.61 feet; thence run N00°04'06"W, a distance of 332.21 feet; thence run N89°39'17"W, a distance of 664.77 feet; thence run N89°28'39"W, a distance of 20.00 feet; thence run S00°00'43"E, a distance of 332.64 feet; thence run N89°25'23"W, a distance of 2,615.32 feet; thence run N89°48'21"W, a distance of 17.50 feet; thence run N00°03'47"W, a distance of 660.33 feet; thence run N89°47'13"W, a distance of 1,285.54 feet; thence run S00°03'46"E, a distance of 660.76 feet; thence run N89°48'21"W, a distance of 677.77 feet; thence run N00°03'46"W, a distance of 1,982.96 feet; thence continue N00°03'46"W along said line, a distance of 2,626.62 feet to a point on the South Right of Way line of Kissimmee Park Road; thence run S89°54'14"E along said South Right of Way line, a distance of 1,320.51 feet to a point on the boundary of the Water Plant Site as recorded in Official Records Book 3040, Page 46, Public Records of Osceola County, Florida; thence along said boundary of said Water Plant Site the following four (4) courses and distances; thence run S00°02'06"E, a distance of 410.68 feet; thence run S89°54'07"E, a distance of 460.85 feet; thence run N57°33'43"E, a distance of 215.39 feet; thence run N00°01'33"W, a distance of 294.86 feet to a point on the aforesaid Right of Way of Kissimmee Park Road; thence along said Right of Way the following two (2) courses and distances; thence run S89°54'14"E, a distance of 35.11 feet; thence run N00°19'41"W, a distance of 349.01 feet; thence departing said Right of Way, run S89°56'02"E, a distance of 1,302.46 feet; thence run N00°16'26"W, a distance of 657.21 feet; thence run N89°54'02"W, a distance of 660.30 feet; thence run N00°18'04"W, a distance of 1,315.19 feet; thence run N89°50'01"W, a distance of 643.42 feet to a point on the East Right of Way of Kissimmee Park Road; thence along said East Right of Way the following two (2) courses and distances; thence run N00°19'41"W, a distance of 328.99 feet; thence run N00°20'10"W, a distance of 409.93 feet to a point on the boundary of Well Site #2 as recorded in Official Records Book 3040, Page 24, Public Records of Osceola County, Florida; thence along said boundary the following two (2) courses and distances; thence run S89°44'21"E, a distance of 250.03 feet; thence run N00°20'10"W, a distance of 250.03 feet; thence run S89°44'21"E, a distance of 393.83 feet; thence run N00°18'45"W, a distance of 1,957.22 feet; thence run N48°59'04"E, a distance of 30.18 feet; thence run N00°11'18"W, a distance of 330.04 feet; thence run N89°30'18"W, a distance of 667.59 feet to a point on the East right of Way line of Kissimmee Road; thence run N00°11'18"W, a distance of 146.08 feet to a point on the Right of Way for the Florida's Turnpike; thence along said Right of Way the following seven (7) courses and distances; thence run N89°36'48"E, a distance of 72.12 feet; thence run

N00°23'12"W, a distance of 98.77 feet; to the Point of Curvature of a curve, concave to the East, having a Radius of 1,055.93 feet and a Central Angle of 24°02'29"; thence run Northerly, along the Arc of said curve, a distance of 443.07 feet (Chord Bearing = N11°38'03"E, Chord = 439.83 feet) to the Point of Tangency thereof; thence run N23°39'18"E, a distance of 28.83 feet; thence run S50°40'48"E, a distance of 610.80 feet; to the Point of Curvature of a curve, concave to the Southwest, having a Radius of 5,604.58 feet and a Central Angle of 03°51'08"; thence run Southeasterly, along the Arc of said curve, a distance of 376.82 feet (Chord Bearing = S48°45'14"E, Chord = 376.75 feet) to a point; thence run S42°46'53"E, a distance of 1,089.11 feet; to the Point of Curvature of a curve, concave to the Southwest, having a Radius of 5,529.58 feet and a Central Angle of 35°21'16"; thence run Southeasterly, along the Arc of said curve, a distance of 3,412.05 feet (Chord Bearing = S25°06'15"E, Chord = 3,358.17 feet) to the Point of Tangency thereof; thence run S07°25'37"E, a distance of 1,525.20 feet; thence departing said Right of Way, run N89°06'39"W, a distance of 636.55 feet; thence run S00°12'52"E, a distance of 328.22 feet to the Point of Beginning..

Containing 726.418 acres, more or less.

Note: Lot 63, THE SEMINOLE LAND AND INVESTMENT COMPANY'S (INCORPORATED) SUBDIVISION OF SECTION 21, TOWNSHIP 26 SOUTH, RANGE 30 EAST, as recorded in Plat Book "B", Page 8, Public Records of Osceola County, Florida, is NOT INCLUDED from the interior of the above described parcel.

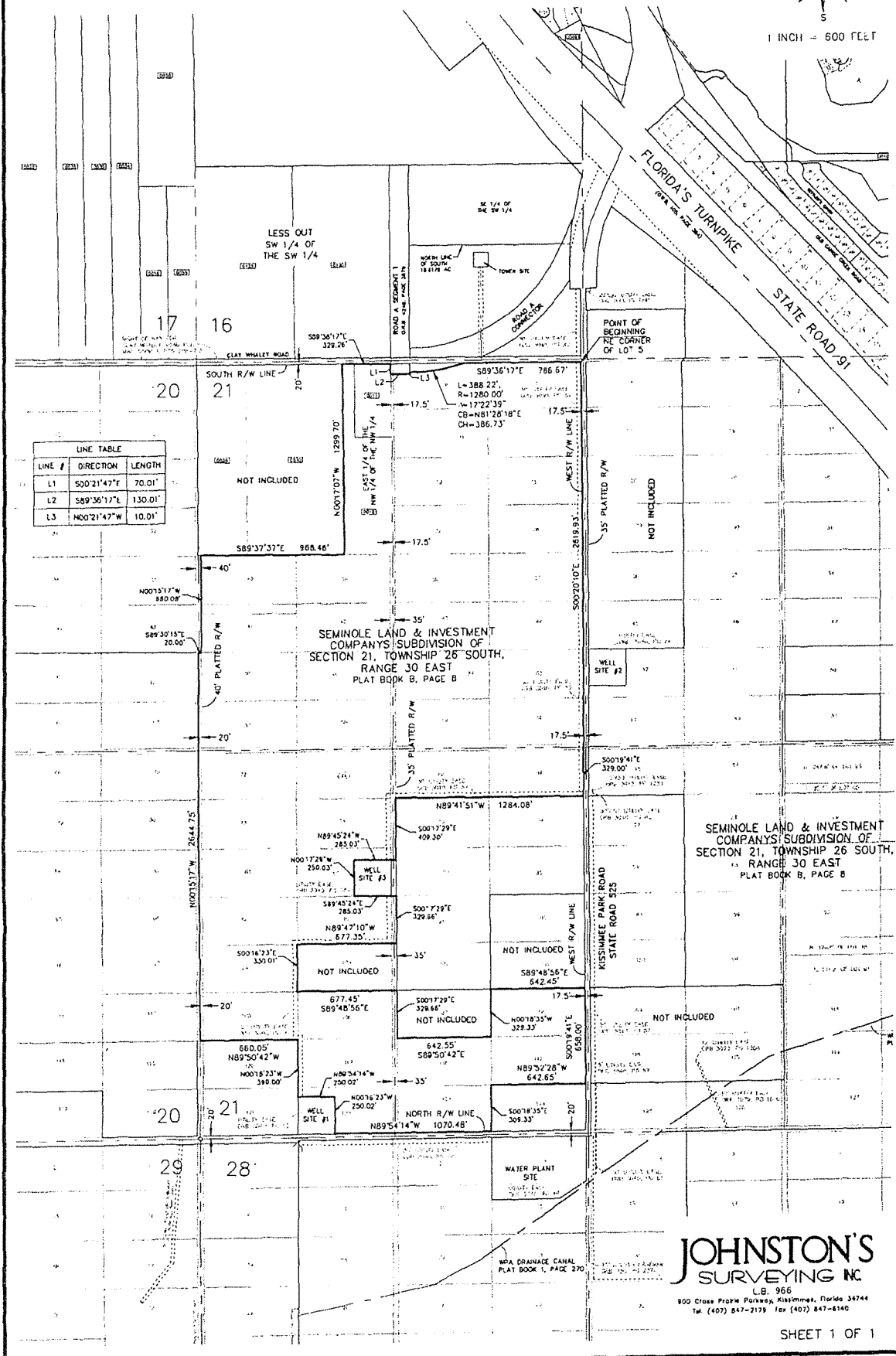
(this area also includes platted Right of Ways lying within and adjacent to the boundary of the described parcel that have not been formally vacated)

FOR A TOTAL ACREAGE OF: 1284.715

SKETCH OF DESCRIPTION CDD PARCEL 3



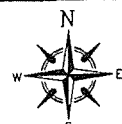
1 INCH = 600 FEET



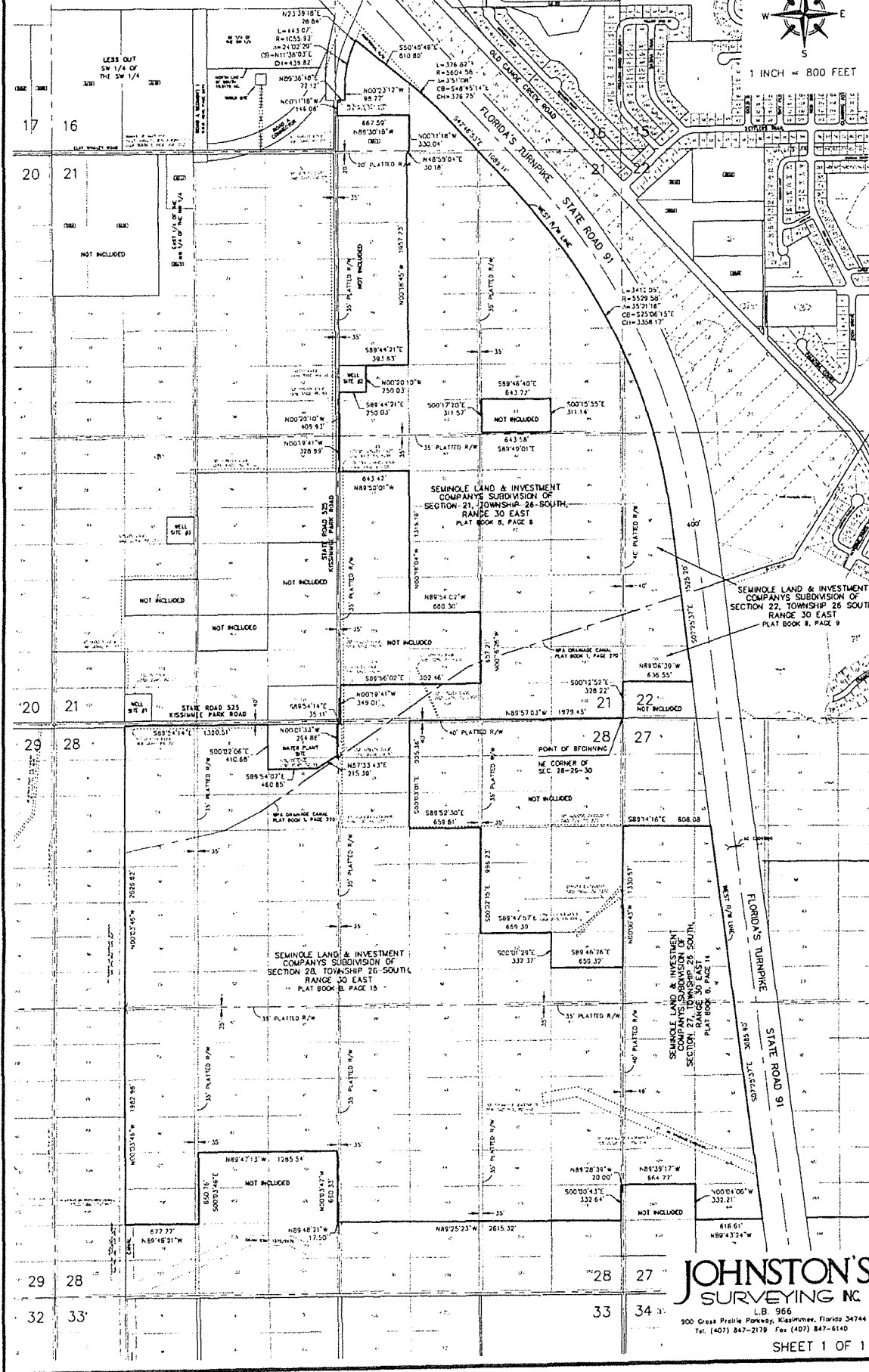
LINE #	DIRECTION	LENGTH
L1	S00°21'47"E	70.01'
L2	S89°36'17"W	130.01'
L3	N00°21'47"W	10.01'

**JOHNSTON'S
SURVEYING INC.**
L.B. 966
800 Cross Creek Parkway, Kissimmee, Florida 34744
Tel. (407) 847-2179 Fax (407) 847-8140

SKETCH OF DESCRIPTION CDD PARCEL 4



1 INCH = 800 FEET



JOHNSTON'S
SURVEYING INC.

L.B. 966
900 Cross Profile Parkway, Kissimmee, Florida 34744
Tel. (407) 847-2179 Fax (407) 847-6140

STATE OF FLORIDA DEPARTMENT OF STATE

I, LAUREL M. LEE, Secretary of State of the State of Florida, do hereby certify that the above and foregoing is a true and correct copy of Osceola County Ordinance No. 2020-66, which was filed in this office on September 23, 2020, pursuant to the provisions of Section 125.66, Florida Statutes, as shown by the records of this office.



Given under my hand and the
Great Seal of the State of Florida
at Tallahassee, the Capitol, this the
24th day of September, A.D., 2020.

Laurel M. Lee
Secretary of State

If photocopied or chemically altered, the word "VOID" will appear.

State of Florida appears in small letters across the face of this 8 1/2 x 11 document